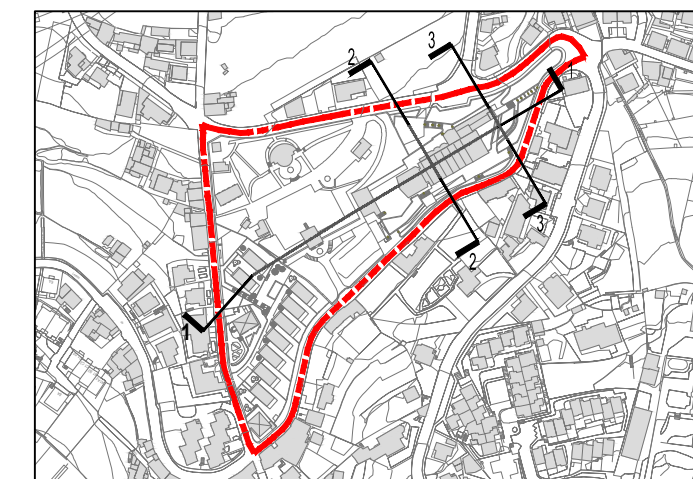
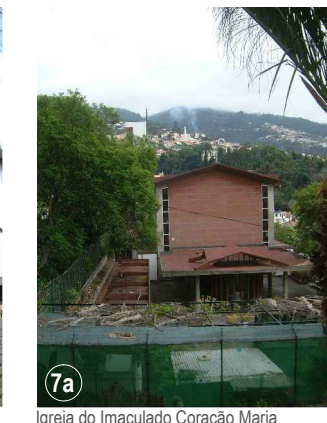
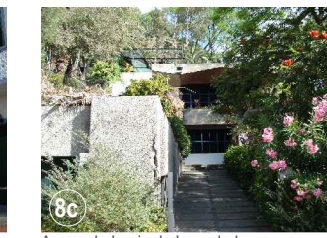
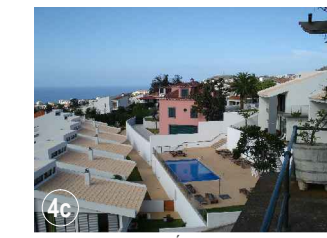
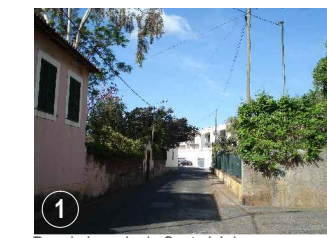


LEVANTAMENTO FOTOGRÁFICO



CÂMARA MUNICIPAL DO FUNCHAL
DEPARTAMENTO DE PLANEAMENTO ESTRATÉGICO
DIVISÃO DE PLANEAMENTO URBANÍSTICO

PROJECITO

PLANO DE PORMENOR DA QUINTA DO POÇO

FASE
PROJECTO DE PLANO

PEÇA DESENHADA
PERFIS DE CONJUNTO

ESCALA
1/1000

2.6

DATA
MAIO 2007